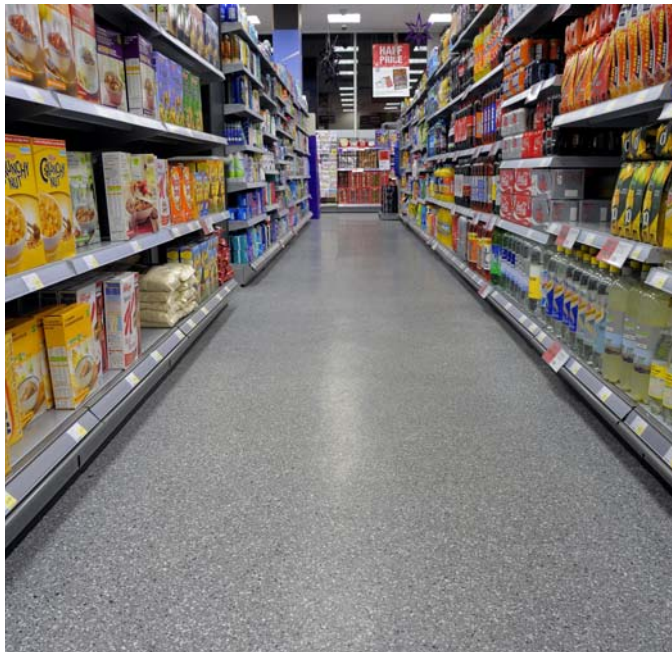


Flowseal Ultra Flakes



Description

Flowseal Ultra Flakes is a seamless, hard wearing decorative resin floor system made up of color stable flakes encapsulated in a pure **Polyurea** binder, designed to provide a functional yet stylish surface. Flowseal Ultra Flakes has been developed to enable fast track applications; typically installation time is one day or less, reducing downtimes dramatically.

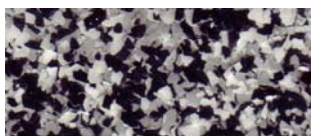
Uses

Ideal for grocery stores, public areas, commercial applications, shops and showrooms, department stores, restaurants, airports, schools and hospitals.

Benefits

- Attractive decorative finish
- Extensive design potential
- Seamless hygienic finish
- Easy to clean and maintain
- Chemical resistance
- High scratch resistance
- Wear resistant surface for wheeled traffic
- Fast installation
- UV stable
- No odor

Standard Color Chart



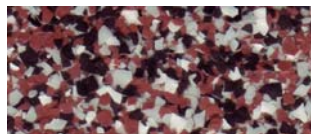
Domino



Cobblestone



Quicksilver



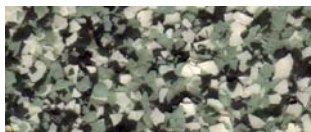
Scarlett



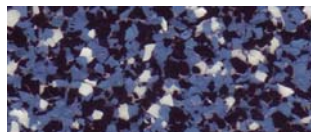
Desert Tan



Ice Blue



Green Bay

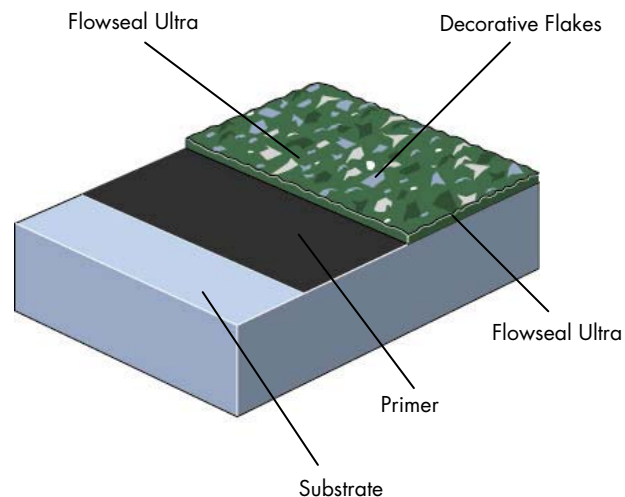


Midnight

The applied colors may differ slightly from the examples shown above. Contact our customer services for a true color sample or a special color match.

Solid colors and special blends are available upon request.

System Design



Model Specification

Product: Flowseal Ultra Flakes

Finish: Gloss

Thickness: 30-40 mil (nominal)

Preparatory work and application in accordance with manufacturer's instructions.

Manufacturer: Flowcrete Americas

Telephone : Customer Service 936 539 6700

Substrate Requirements

Concrete or screed substrate should be a minimum of 3,625 psi, free from laitance, dust and other contamination. The substrate should be dry to ASTM requirements and free from excessive moisture vapor transmission.

Products Included in this System

Primer: Flowprime AQ @ 200 sq ft/ gal

Base: Flowseal Ultra @ 100 sq ft/ gal

Broadcast: Color Flakes @ 0.25 lbs/ sq ft

Sealer: Flowseal Ultra @ 175 sq ft/ gal

Additional primer and membrane options are available for damp surfaces, crack bridging and high movement. Consult technical service for additional details.

The base coat can be pigmented by adding 2 pigment packs per 3 gallon units.

Glass beads can be incorporated in the sealer to provide better slip resistance.

Additional topcoats can be applied for a smoother surface. For topcoat options please consult our Technical Advisors.

Detailed application instructions are available upon request.

*Coverages listed are theoretical, actual coverages may vary based on substrate and site variations.

Flooring Design Service

Special corporate colors and designs can be produced to special order.

Installation Service

The installation should be carried out by a Flowcrete preferred contractor with a documented quality assurance program.

Obtain details of our preferred contractors by contacting our customer service team or enquiring via our web site www.flowcreteamericas.com

Technical Information

The figures that follow are typical properties achieved in laboratory tests at 68°F and at 50% Relative Humidity.

Hardness (Shore D)	(ASTM D-2240) 60
Tensile Strength	(ASTM C-307) 2250 psi
Tensile Elongation	(ASTM D-638) 100%
Bond Strength to Concrete	(ASTM D-4541) concrete failure
Impact Resistance	(MIL D-3134) Pass
Chemical Resistance	Very Good chemical resistance Contact Flowcrete Americas for chemical resistance chart
Water Absorption	(ASTM D-570) 0.0008%
Heat Resistance Limitation	165°F
Coefficient of Friction	(ASTM D-2047) Orange Peel: 0.8 Smooth: 0.7
Solids	100%

Aftercare - Cleaning and Maintenance

Clean floors regularly using a rotary scrubber in conjunction with a mildly alkaline detergent.

Environmental Considerations

The finished system is assessed as non-hazardous to health and the environment. The long service life and seamless surface reduce the need for repairs, maintenance and cleaning. Environmental and health considerations are controlled during manufacture and application of the products by Flowcrete staff and fully trained and experienced contractors.

Important Note - Warranty

Flowcrete's products are guaranteed against defective materials and manufacture and are sold subject to our standard Warranty, Terms and Conditions of Sale, copies of which can be obtained on request. Warranty does not cover suitability, fit for purpose or any consequential or related damages. Please review warranty in detail before using products.

Further Information

If you would like additional information please consult our Technical Advisory Team at the number listed below or visit our website to register your interest in specifying a Flowcrete flooring system.

Disclaimer: Any recommendation or suggestion relating to the use of the products made by Flowcrete Americas, whether in its technical literature, or in response to a specific enquiry, or otherwise, is based upon data believed to be reliable, however the products and information are intended for use by Customers having requisite skill and know-how in the industry and therefore it is for the Customer to satisfy itself of the suitability of the products for its own particular use and it shall be deemed that the Customer has done so at its sole discretion and risk.



2014.06.03 ENG