

## Kristalina



### Description

Kristalina is a hard wearing, decorative, smooth, sparkling epoxy floor system, ideal for a modern contemporary environment.

It offers a combination of functionality and shimmering style.

### Uses

Ideal for public areas, shops, department stores, restaurants, garden centers, restaurants, casinos, trendy bars and cafes, discos, casinos, museums and art galleries.

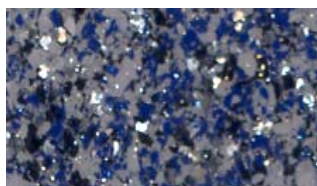
### Benefits

- Glittering floor finish
- Modern and contemporary
- Seamless hygienic finish
- Easy to clean and maintain
- Hard wearing
- High scratch resistance

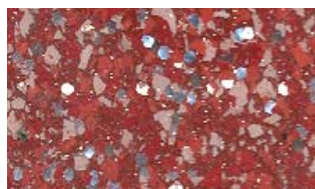
### Standard Color Chart



Pearl



Azure Blue



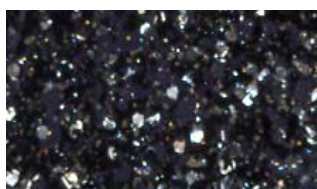
Cranberry



Emerald



Granite



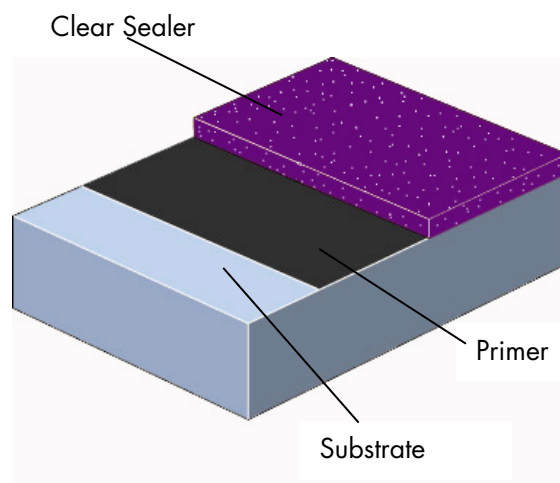
Ebony

The applied colors may differ slightly from the examples shown above. Contact our customer services for a true color sample or a special color match.

### Project Reference

Brondby Stadium, Abertay University, Temasek Polytechnic, Selfridges London, Beverly Hills Center.

### System Design



## Model Specification

Product: Kristalina  
Finish: Gloss or Matte  
Thickness: 60-80 mil  
Preparatory work and application in accordance with manufacturer's instructions.  
Supplier: Flowcrete Americas  
Telephone : Customer Service 936 539 6700

## Substrate Requirements

Concrete or screed substrate should be a minimum of 3,625 psi, free from laitance, dust and other contamination. The substrate should be dry to ASTM requirements and free from excessive moisture vapor transmission.

## Products Included in this System

Primer: Flowseal EPW @ 200 sq ft/ gal  
Flood Layer: Flowseal EPW @ 200 sq ft/ gal  
Flakes: Kristalina flakes @ 0.25 lbs/ sq ft  
Sealer: Peran STC @ 140 sq ft/ gal  
Topcoat: Flowseal PU Gloss @ 300 sq ft/ gal

Glass beads can be incorporated to provide better slip resistance.

Detailed application instructions are available upon request.

\*Coverages listed are theoretical, actual coverages may vary based on substrate and site variations.

## Flooring Design Service

Special corporate colors and designs can be produced to special order.

## Installation Service

The installation should be carried out by a Flowcrete preferred contractor with a documented quality assurance program. Obtain details of our preferred contractors by contacting our customer service team or enquiring via our web site [www.flowcreteamericas.com](http://www.flowcreteamericas.com)

## Environmental Considerations

The finished system is assessed as non-hazardous to health and the environment. The long service life and seamless surface reduce the need for repairs, maintenance and cleaning. Environmental and health considerations are controlled during manufacture and application of the products by Flowcrete staff and fully trained and experienced contractors.

## Technical Information

The figures that follow are typical properties achieved in laboratory tests at 68 °F and at 50% Relative Humidity.

<b>Fire Resistance</b>	Class G Certificate No 1721/75 SITAC
<b>Slip Resistance</b>	Method described in BS 7976-2 (typical values for 4-S rubber slider) Dry 56 Wet 23 (with glass beads Wet 40 minimum)
<b>Abrasion Resistance</b>	BS 8204-2 Class AR2 – Medium duty industrial and commercial.
<b>Temperature Resistance</b>	Tolerant of sustained temperatures up to 120°F
<b>Water Permeability</b>	Nil - Karsten test (impermeable)
<b>Vapour Permeability</b>	ASTM E96:90 2.5 g /m <sup>2</sup> / mm/24hrs
<b>Chemical Resistance</b>	Good resistance to tea, coffee, cola, fruit juice, soaps and bleach. Contact Flowcrete Americas for chemical resistance chart
<b>Impact</b>	2.2 lb weight > 70 inch 4.4 lb weight > 59 inch
<b>Flexural Strength</b>	2,175 psi (ASTM C580)
<b>Tensile Strength</b>	1,450 psi (ASTM C307)
<b>Bond Strength</b>	Greater than cohesive strength of 3,625 psi concrete. >220 psi.
<b>VOC (Peran STC)</b>	12 g/l

## Aftercare - Cleaning and Maintenance

Clean regularly using a rotary scrubber in conjunction with a mildly alkaline detergent.

## Important Note - Warranty

Flowcrete's products are guaranteed against defective materials and manufacture and are sold subject to our standard Warranty, Terms and Conditions of Sale, copies of which can be obtained on request. Warranty does not cover suitability, fit for purpose or any consequential or related damages. Please review warranty in detail before using products.

## Further Information

If you would like additional information please consult our Technical Advisory Team at the number listed below or visit our website to register your interest in specifying a Flowcrete flooring system.

**Disclaimer:** Any recommendation or suggestion relating to the use of the products made by Flowcrete Americas, whether in its technical literature, or in response to a specific enquiry, or otherwise, is based upon data believed to be reliable, however the products and information are intended for use by Customers having requisite skill and know-how in the industry and therefore it is for the Customer to satisfy itself of the suitability of the products for its own particular use and it shall be deemed that the Customer has done so at its sole discretion and risk.

